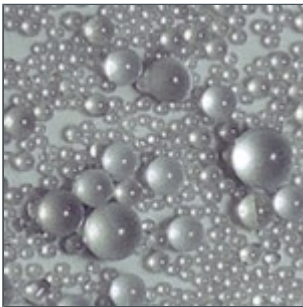




## SWARCOLUX

REFLECTIVE GLASS BEADS FROM 1 TO 1400 MICROMETERS FOR ROAD MARKING MATERIALS  
UNDER WET CONDITIONS

Thanks to their superior retroreflectivity SWARCOLUX beads are particularly suited for road marking systems with enhanced retroreflectivity under wet conditions.



SWARCOLUX (roundness  $\geq 80\%$ ) are high quality glass bead blends of SWARCOFLEX with MEGALUX-BEADS®. These blends, sized between 100 and 1700 microns, provide extraordinary reflectivity due to the improved optical properties of the bead surfaces.

Consumption: 400 - 600 g/m<sup>2</sup>

Example for product name: SWARCOLUX 50 212-1400 T18MK30





## 12 REASONS

### 12 REASONS FOR OUR BEADS



1. SWARCO has been producing glass microspheres for almost 4 decades and has a lot of experience in this field.
2. SWARCO has a large number of long-time customers who have been our loyal partners for many years.
3. SWARCO's largest glass bead productions are located in the heart of Europe where comprehensive road networks have to ensure the mobility of millions of people every day. It is essential for us to be close to our customers.
4. SWARCO utilises only the best raw materials for the production of glass beads.
5. The sequence of processes at SWARCO from order entry to delivery of the finished product is subject to an ISO 9001:2008 certified quality management.
6. SWARCO has extensive systems know-how with regard to the go-together of microspheres with the individual marking materials such as paints (solvent based, waterborne), 2-component paints and plastics (cold plastic, spray plastic, thermoplastic, thermo spray plastic).
7. SWARCO has the equipment and flexibility to custom-make special bead gradations and bead blends.
8. SWARCO delivers even smallest quantities of customer-specific materials. Customer's wish is our command.
9. Working together with reliable logistics partners, SWARCO is able to deliver to any place in Europe within hours.
10. SWARCO provides advice to its customers concerning the various types of bead coatings. This ensures optimum results and long-term performance of the glass beads.
11. SWARCO offers its partners on-site services in all technical aspects of the marking system. This includes monitoring of striping applications with the different systems as well as retroreflectivity measurements in line with EU standards.
12. SWARCO is doing research & development in the field of glass beads in order to be able to offer the most innovative products for retroreflection also in the future.





## YOUR CONTACT

**M. SWAROVSKI GmbH**

Industriestr. 10, 3300 Amstetten, Austria

T. +43-7472-202-0

[office.msa@swarco.com](mailto:office.msa@swarco.com)

[www.swarco.com/msa](http://www.swarco.com/msa)